

Coastal Distribution System Water Quality

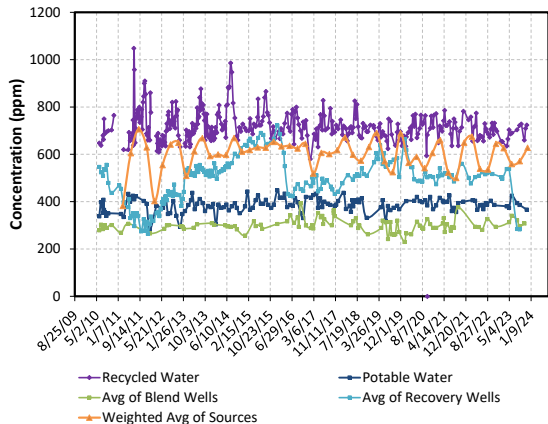
	System Production (AF)	System Average of Chloride (mg/L)	System Average of Nitrate as NO3-N (mg/L)	System Average of Total Nitrogen (mg/L)	System Average of SAR (Sodium Adsorption Ratio)	System Average of Sodium (mg/L)	System Average of Specific Conductance (E.C.) (millimhos/cm)	System Average of Total Diss. Solids (mg/L)
<i>Water Quality Objective</i>	-	150	10	-	4.00	100	-	-
Third Quarter 2016	1,606	103	5	17	2.63	95	1.05	625
Fourth Quarter 2016	471	124	5	22	2.60	94	1.15	644
First Quarter 2017	212	75	2	13	1.81	68	0.91	519
Second Quarter 2017 ¹	1,399	98	5	18	2.42	91	1.02	606
Third Quarter 2017	1,663	106	8	19	2.93	114	1.03	602
Fourth Quarter 2017	988	115	6	21	2.50	94	1.10	618
First Quarter 2018	460	128	5	27	3.04	113	1.20	671
Second Quarter 2018	1,556	101	6	20	2.39	89	1.03	599
Third Quarter 2018	1,985	76	7	21	2.17	79	0.97	573
Fourth Quarter 2018	877	113	7	30	2.67	98	1.16	631
First Quarter 2019	198	125	6	30	2.80	102	1.26	690
Second Quarter 2019	1,610	89	8	19	2.29	86	1.00	572
Third Quarter 2019	2,192	80	5	19	2.14	78	0.96	525
Fourth Quarter 2019	958	137	8	21	2.98	115	1.29	689
First Quarter 2020	418	100	8	22	2.27	84	1.01	564
Second Quarter 2020	1,622	91	10	16	2.38	86	0.95	590
Third Quarter 2020	1,988	85	3	16	2.25	81	0.94	542
Fourth Quarter 2020	1,171	102	7	19	2.42	87	0.99	606
First Quarter 2021 ²	536	113	7	28	2.80	103	1.15	659
Second Quarter 2021	2,221	77	7	15	1.87	67	0.87	523
Third Quarter 2021	2,037	71	4	15	2.02	75	0.88	501
Fourth Quarter 2021	595	99	8	19	2.72	97	1.14	650
First Quarter 2022	572	119	5	33	3.07	110	1.26	675
Second Quarter 2022	1,727	80	4	28	2.19	77	1.02	539
Third Quarter 2022	1,831	79	3	26	2.24	78	1.01	537
Fourth Quarter 2022	576	128	6	34	2.82	101	1.23	644
First Quarter 2023	132	109	1	33	2.61	97	1.22	626
Second Quarter 2023	1,393	82	4	24	2.11	77	1.03	559
Third Quarter 2023	1,714	83	5	17	2.33	89	0.99	571
Fourth Quarter 2023	769	121	4	26	2.90	109	1.22	628

All samples are analyzed by an Environmental Laboratory Accreditation Program (ELAP) certified lab; results based on weighted quarterly averages of system sources.

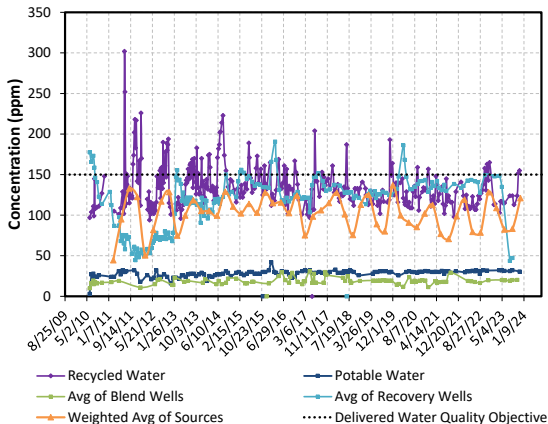
¹Second Quarter 2017 values for system production, SAR, and TDS were amended in October 2017 after a SCADA reporting issue was identified.

²First Quarter 2021 values were amended following identification of a weighting error.

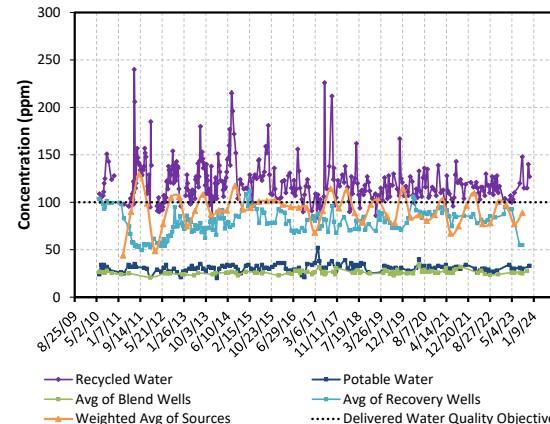
Total Dissolved Solids



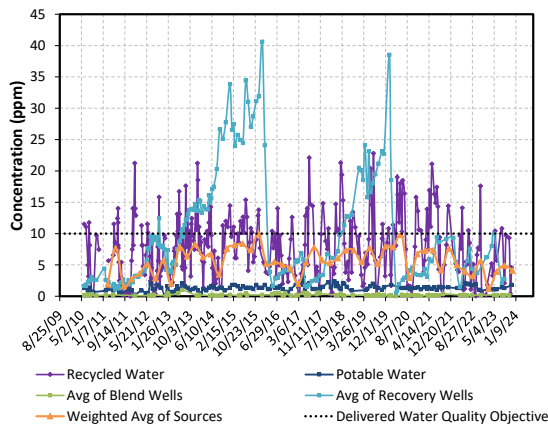
Chloride



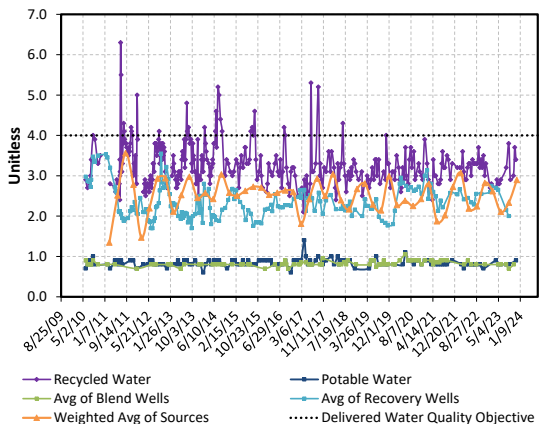
Sodium



Nitrate as NO3-N



Sodium Adsorption Ratio



Specific Conductance

