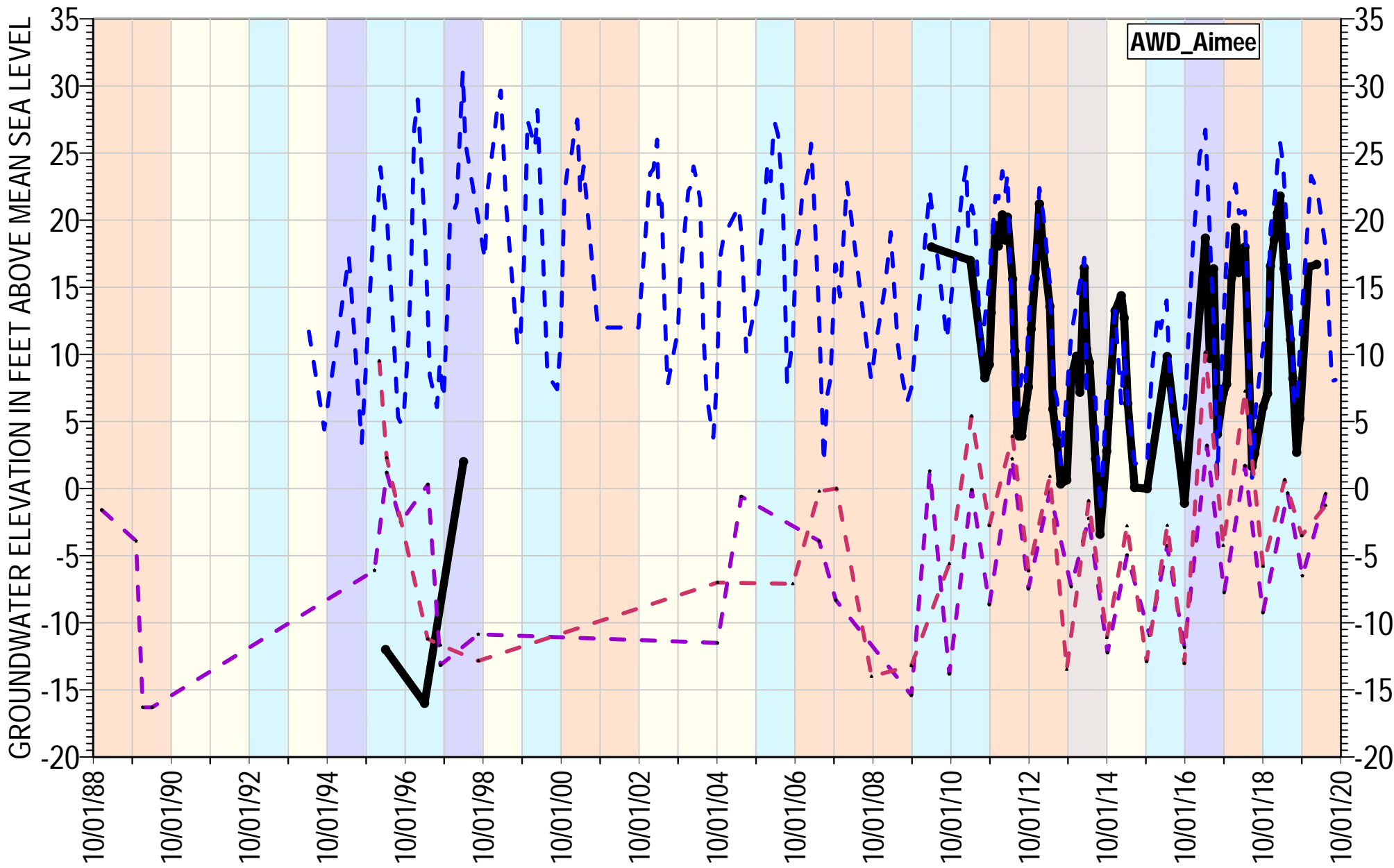


Appendix B

RMP Justification Figures



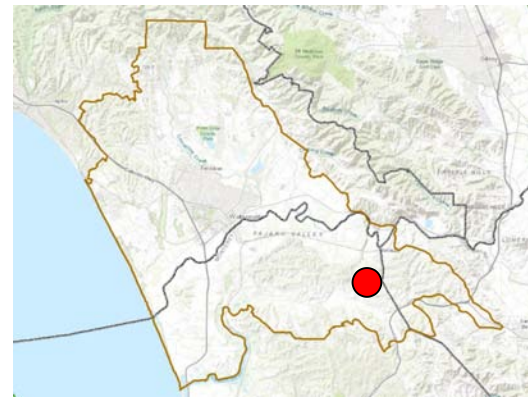
AWD_Aimee

- AWD_Aimee Groundwater Elevation
- Nearby Well 1
- Nearby Well 2
- Nearby Well 3

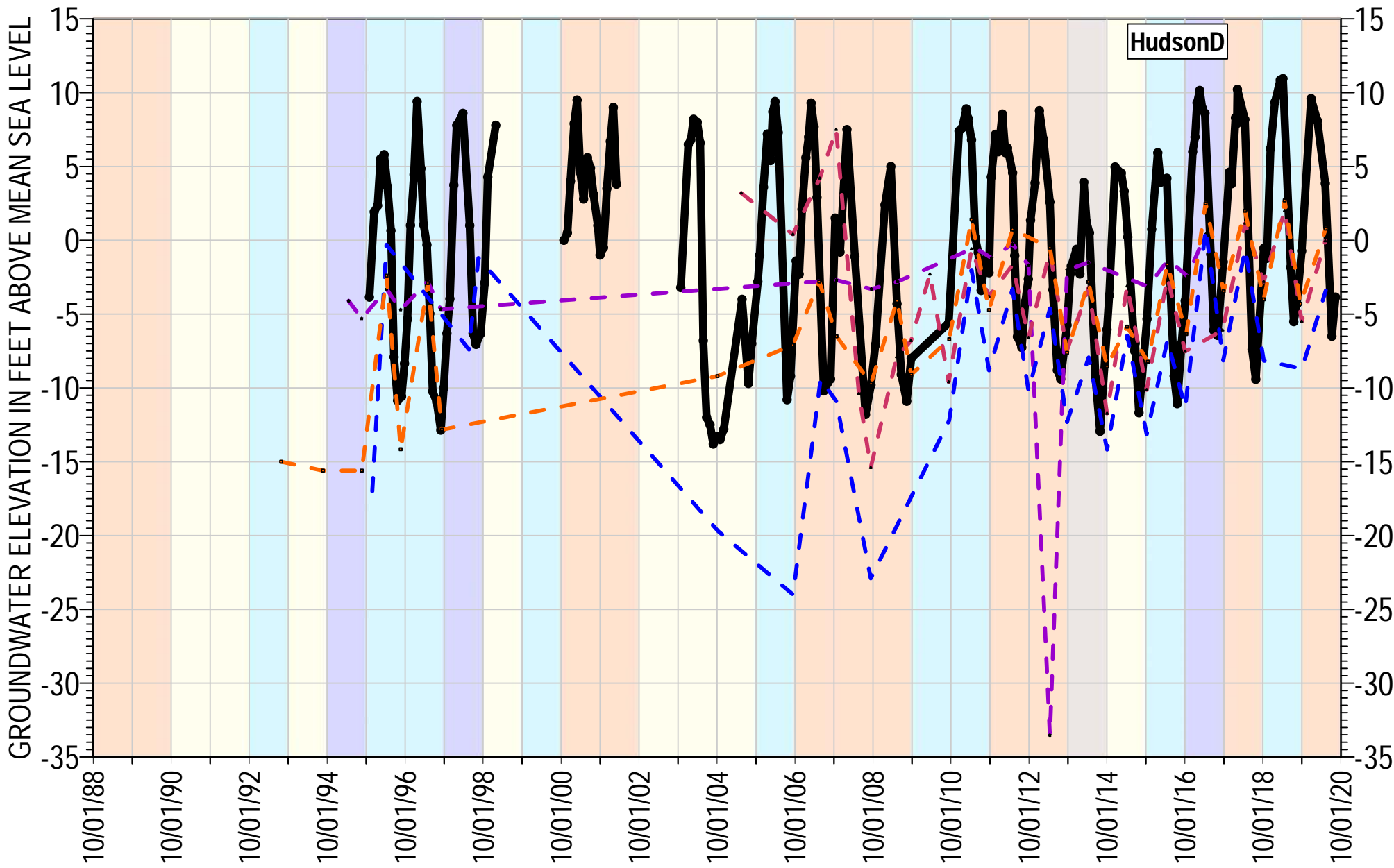
Reference Point Elevation= 208 ft AMSL
 Well Type: Monitoring Well
 Total Depth: 340 ft bgs
 Well Screen Interval= 320-340 ft bgs

Water Year Classification

Very Wet	Dry
Wet	Very Dry
Average	



*Note: Pumping measurements and outlier data removed where applicable



- HudsonD Groundwater Elevation
- Nearby Well 1
- Nearby Well 2
- Nearby Well 3
- Nearby Well 4

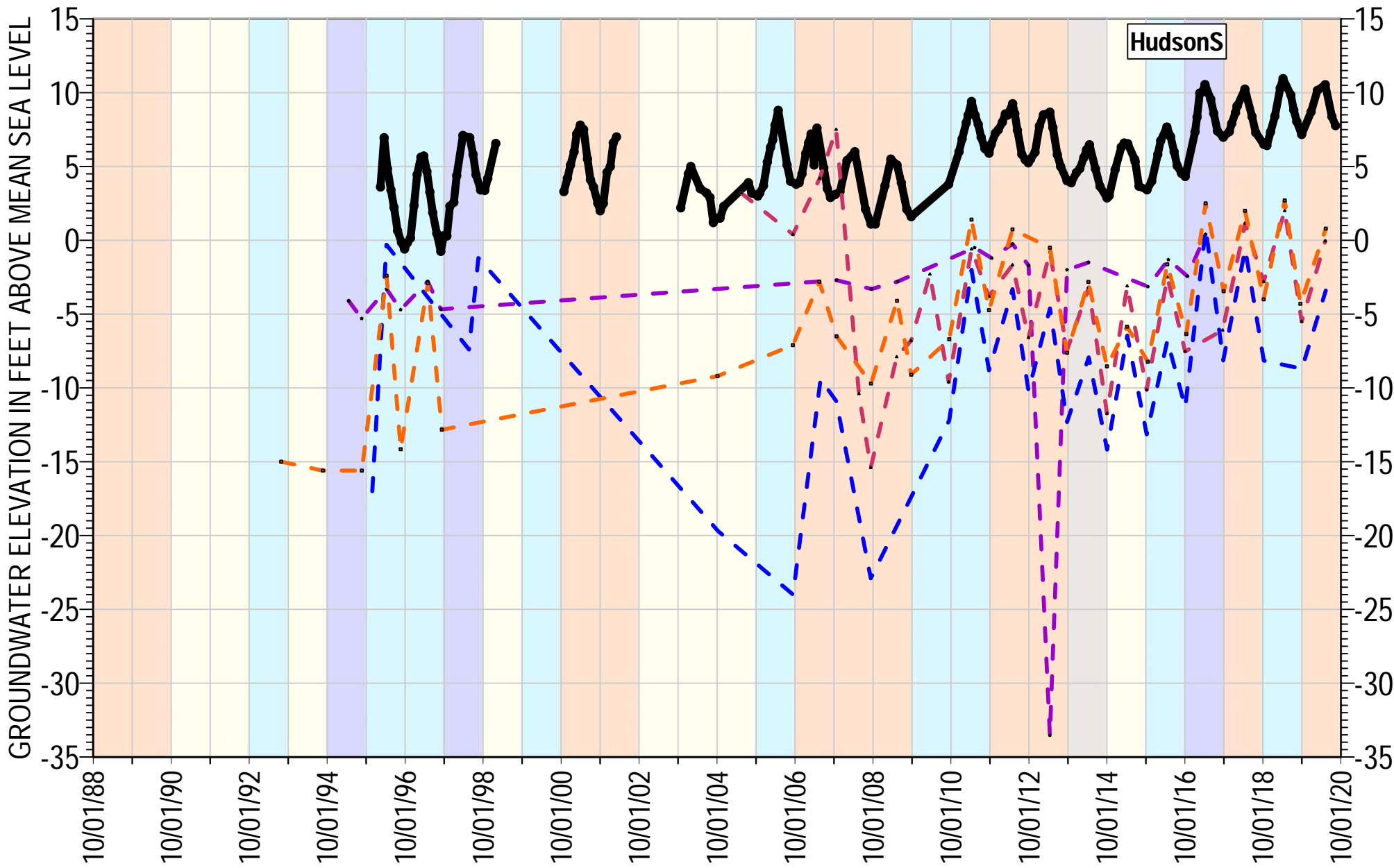
Reference Point Elevation= 23 ft AMSL
 Well Type: Monitoring Well
 Total Depth: 557 ft bgs
 Well Screen Interval= 225-270,350-370,450-470,550-557 ft bgs

Water Year Classification

Very Wet	Dry
Wet	Very Dry
Average	



*Note: Pumping measurements and outlier data removed where applicable



HudsonS

- HudsonS Groundwater Elevation
- Nearby Well 1
- Nearby Well 2
- Nearby Well 3
- Nearby Well 4

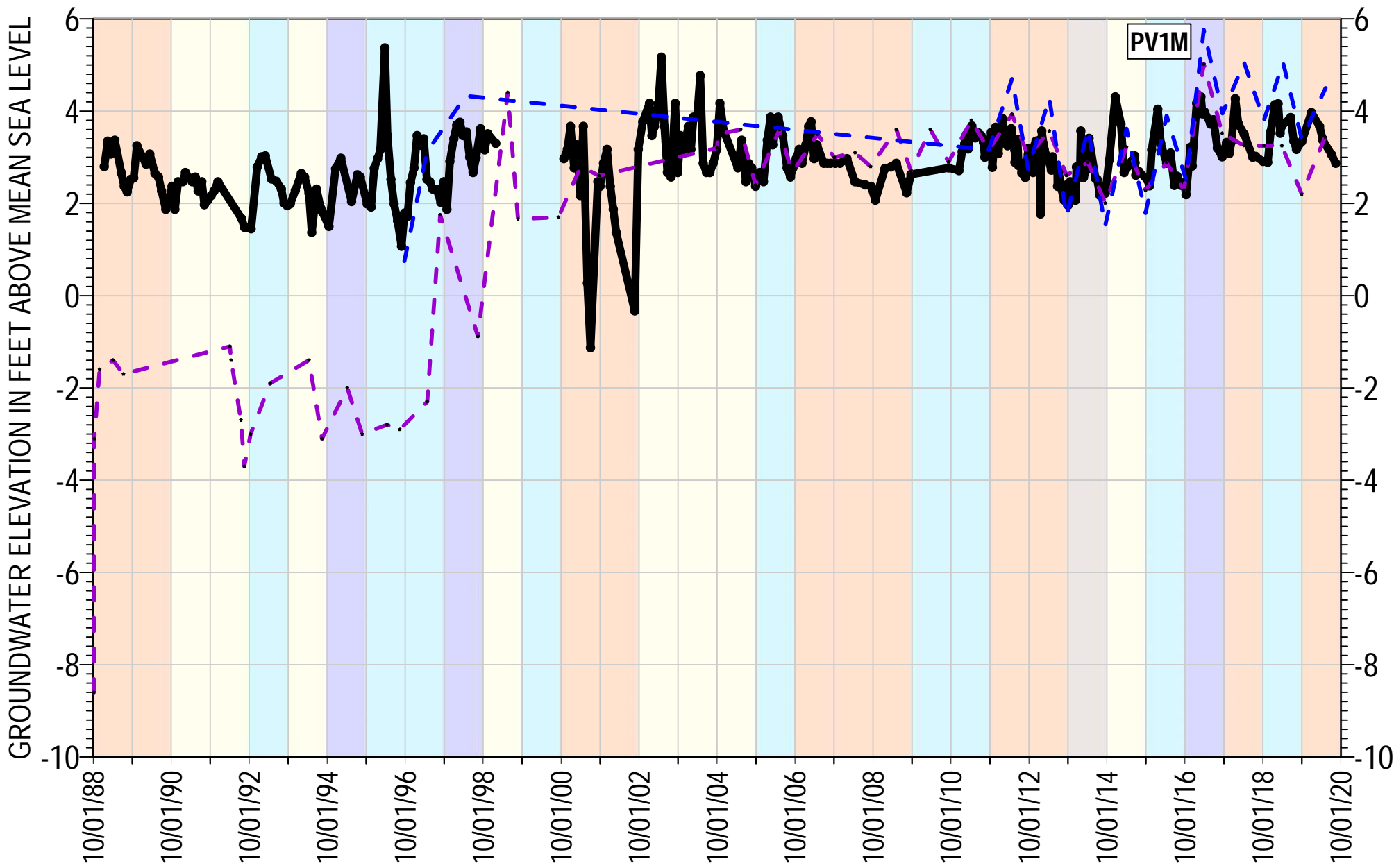
Reference Point Elevation= 23 ft AMSL
 Well Type: Monitoring Well
 Total Depth: 140 ft bgs
 Well Screen Interval= 90-100, 120-140 ft bgs

Water Year Classification

Very Wet	Dry
Wet	Very Dry
Average	



*Note: Pumping measurements and outlier data removed where applicable



- PV1M Groundwater Elevation
- Nearby Well 1
- Nearby Well 2

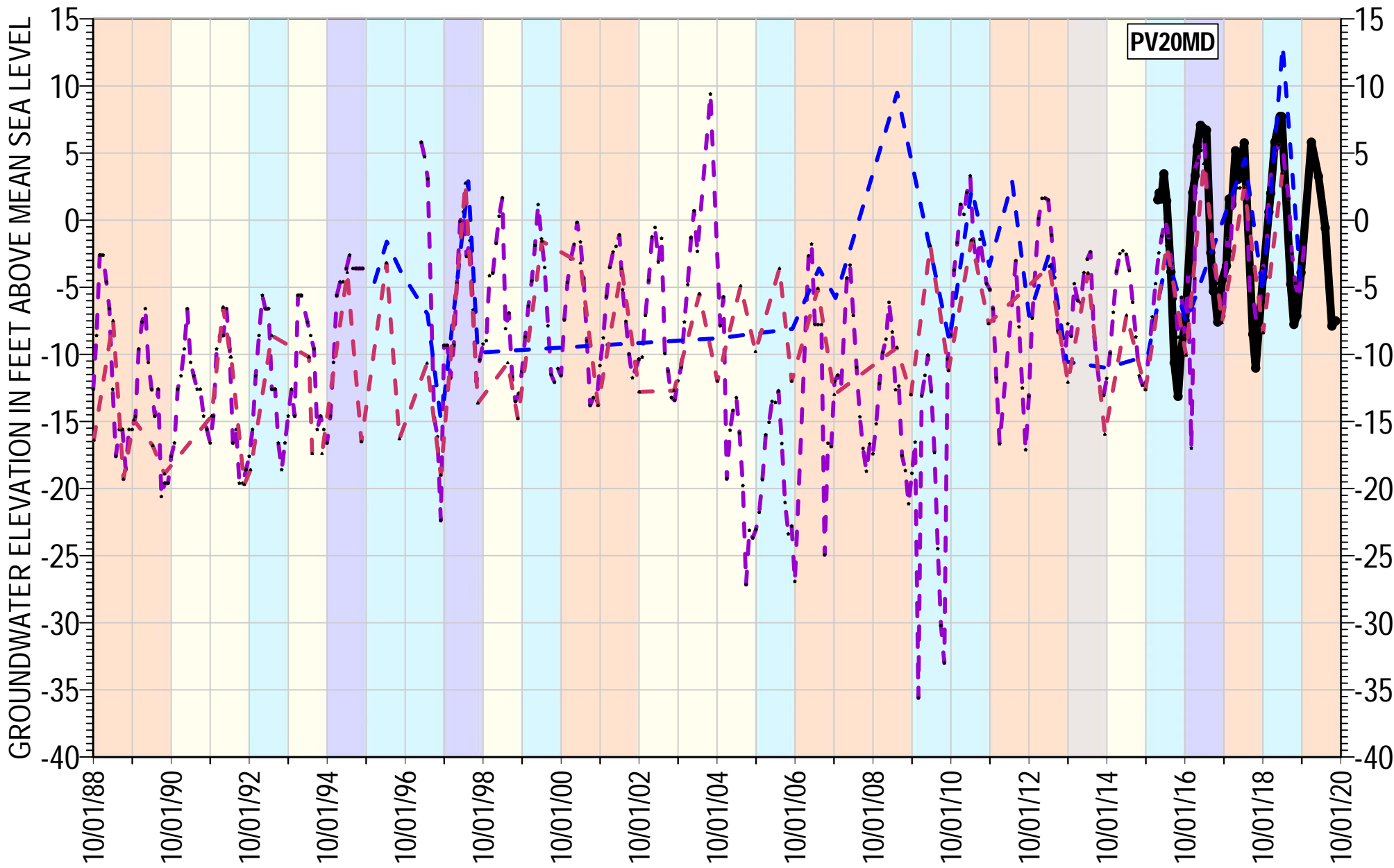
Reference Point Elevation= 71.7 ft AMSL
 Well Type: Nested MW
 Total Depth: 230 ft bgs
 Well Screen Interval= 132.4-171.6, 193.6-230 ft bgs

Water Year Classification

Very Wet	Dry
Wet	Very Dry
Average	



*Note: Pumping measurements and outlier data removed where applicable



- PV20MD Groundwater Elevation
- Nearby Well 1
- Nearby Well 2
- Nearby Well 3

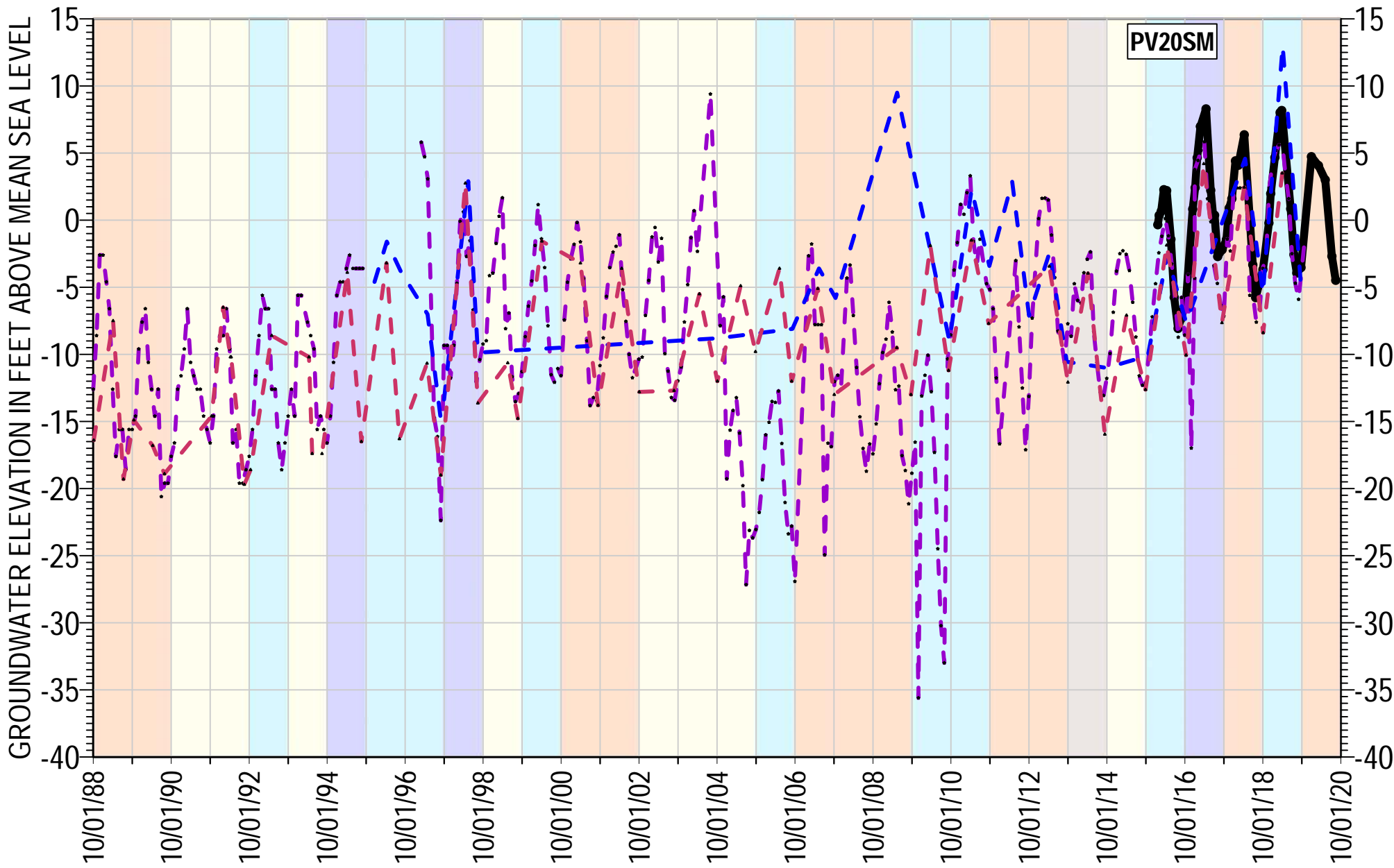
Reference Point Elevation= 38.7 ft AMSL
 Well Type: Nested MW
 Total Depth: 700 ft bgs
 Well Screen Interval= 520-560, 660-700 ft bgs

Water Year Classification

Very Wet	Dry
Wet	Very Dry
Average	



**Note: Pumping measurements and outlier data removed where applicable*



- PV20SM Groundwater Elevation
- Nearby Well 1
- Nearby Well 2
- Nearby Well 3

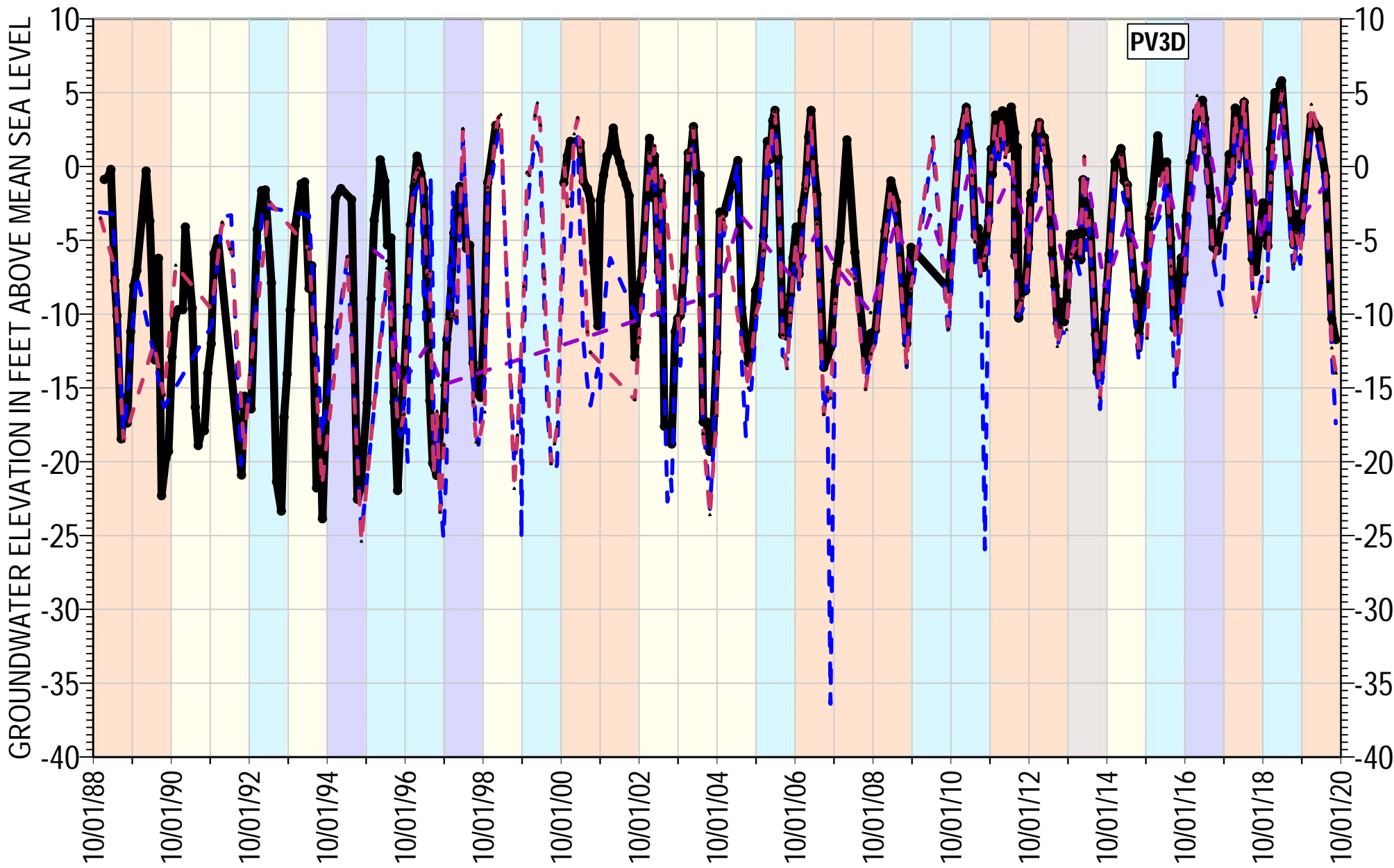
Reference Point Elevation= 38.7 ft AMSL
 Well Type: Nested MW
 Total Depth: 340 ft bgs
 Well Screen Interval= 210-230, 270-290, 320-340 ft bgs

Water Year Classification

Very Wet	Dry
Wet	Very Dry
Average	



*Note: Pumping measurements and outlier data removed where applicable



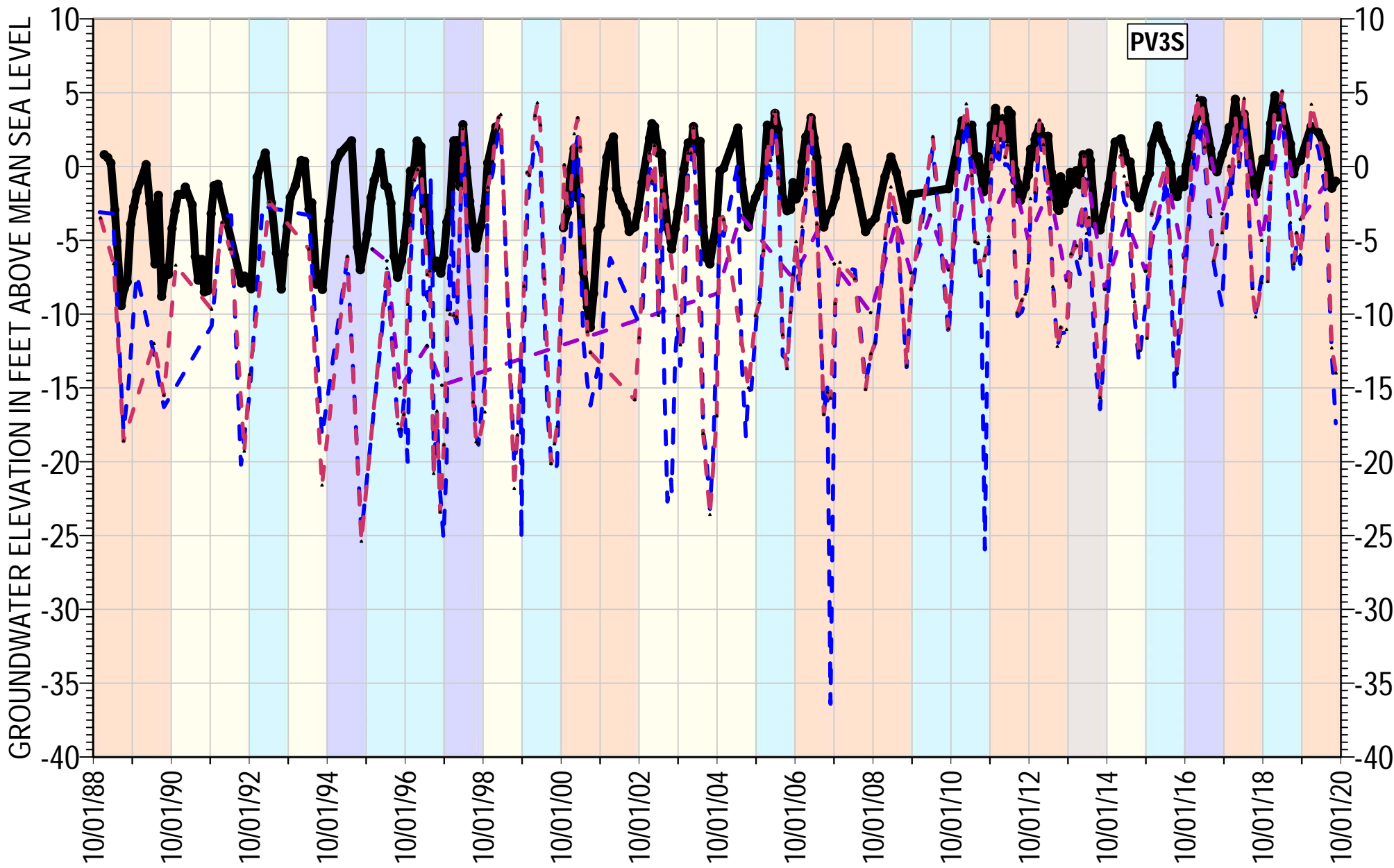
- PV3D Groundwater Elevation
- - -** Nearby Well 1
- - -** Nearby Well 2
- - -** Nearby Well 3

Reference Point Elevation= 6.9 ft AMSL
 Well Type: Nested MW
 Total Depth: 606 ft bgs
 Well Screen Interval= 384-404, 464-486, 567-606 ft bgs

- Water Year Classification**
- Very Wet
 - Dry
 - Wet
 - Very Dry
 - Average



**Note: Pumping measurements and outlier data removed where applicable*



PV3S

- PV3S Groundwater Elevation
- - -** Nearby Well 1
- - -** Nearby Well 2
- - -** Nearby Well 3

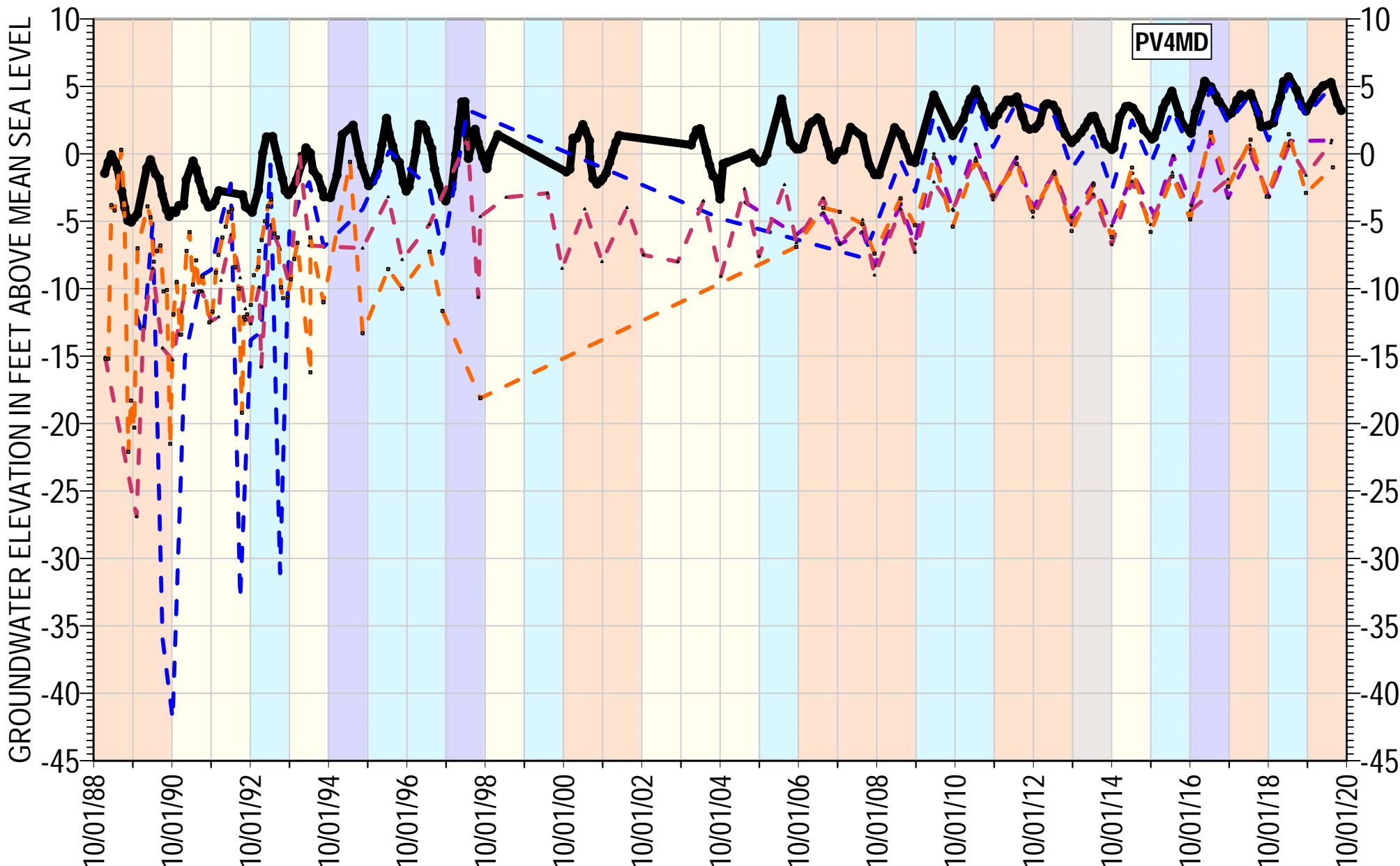
Reference Point Elevation= 6.9 ft AMSL
 Well Type: Nested MW
 Total Depth: 170 ft bgs
 Well Screen Interval= 140-150, 160-170 ft bgs

Water Year Classification

 Very Wet	 Dry
 Wet	 Very Dry
 Average	



*Note: Pumping measurements and outlier data removed where applicable



- PV4MD Groundwater Elevation
- Nearby Well 1
- Nearby Well 2
- Nearby Well 3
- Nearby Well 4

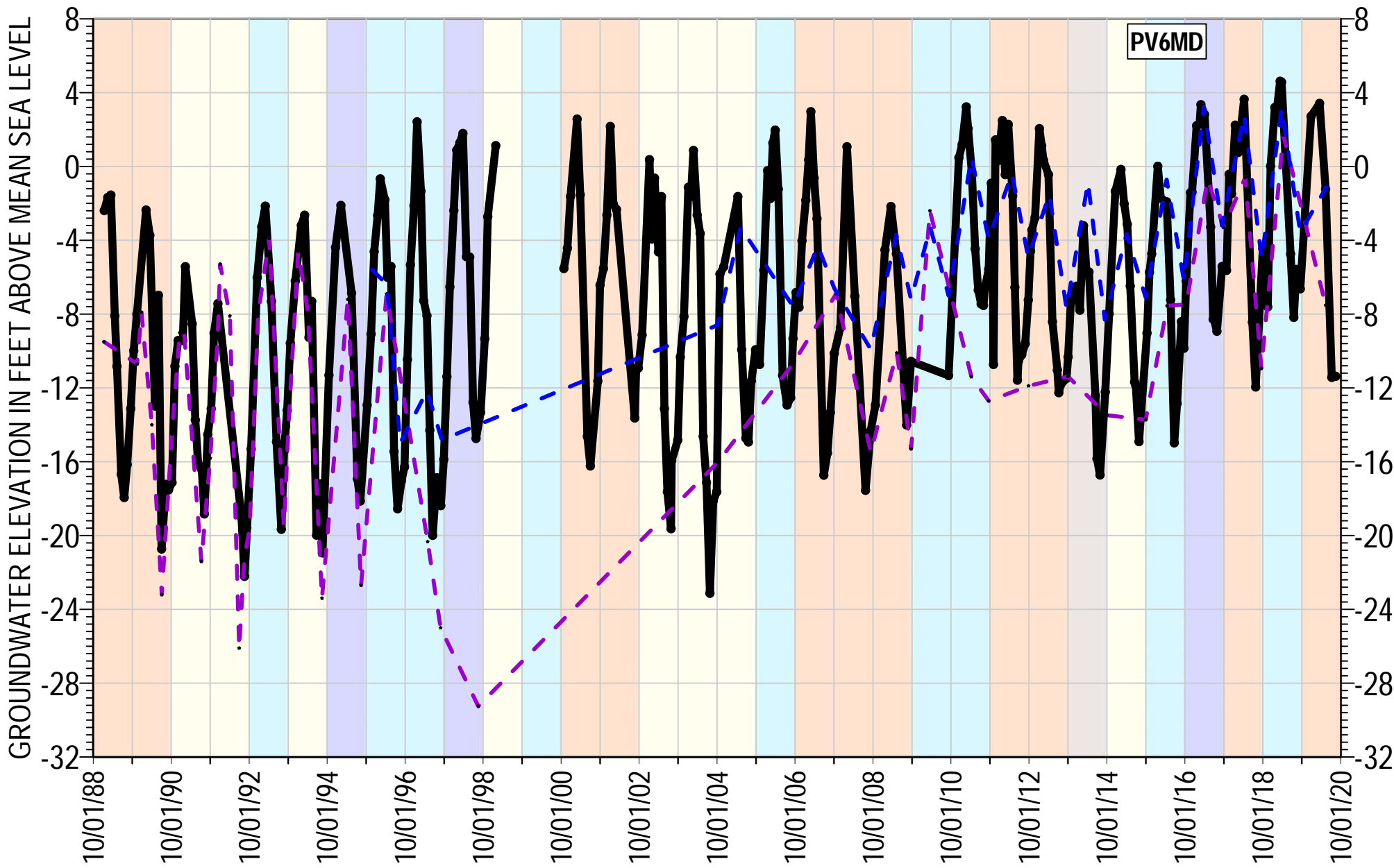
Reference Point Elevation= 23.36 ft AMSL
 Well Type: Nested MW
 Total Depth: 160 ft bgs
 Well Screen Interval= 130-160 ft bgs

Water Year Classification

Very Wet	Dry
Wet	Very Dry
Average	



*Note: Pumping measurements and outlier data removed where applicable



- PV6MD Groundwater Elevation
- Nearby Well 1
- Nearby Well 2

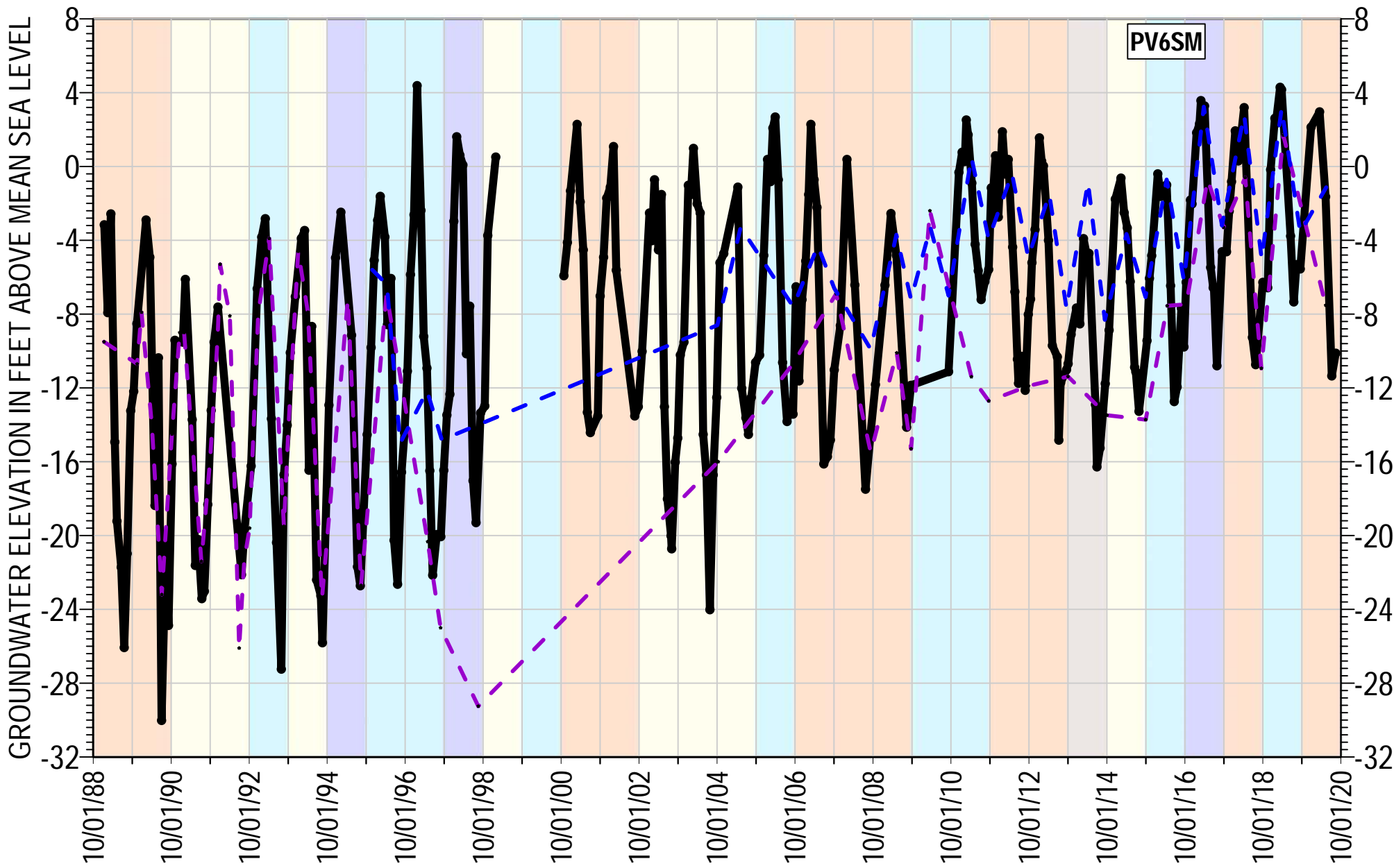
Reference Point Elevation= 9.4 ft AMSL
 Well Type: Nested MW
 Total Depth: 663 ft bgs
 Well Screen Interval= 526-556, 607.6-663.2 ft bgs

Water Year Classification

Very Wet	Dry
Wet	Very Dry
Average	



**Note: Pumping measurements and outlier data removed where applicable*



PV6SM Groundwater Elevation
 Nearby Well 1
 Nearby Well 2

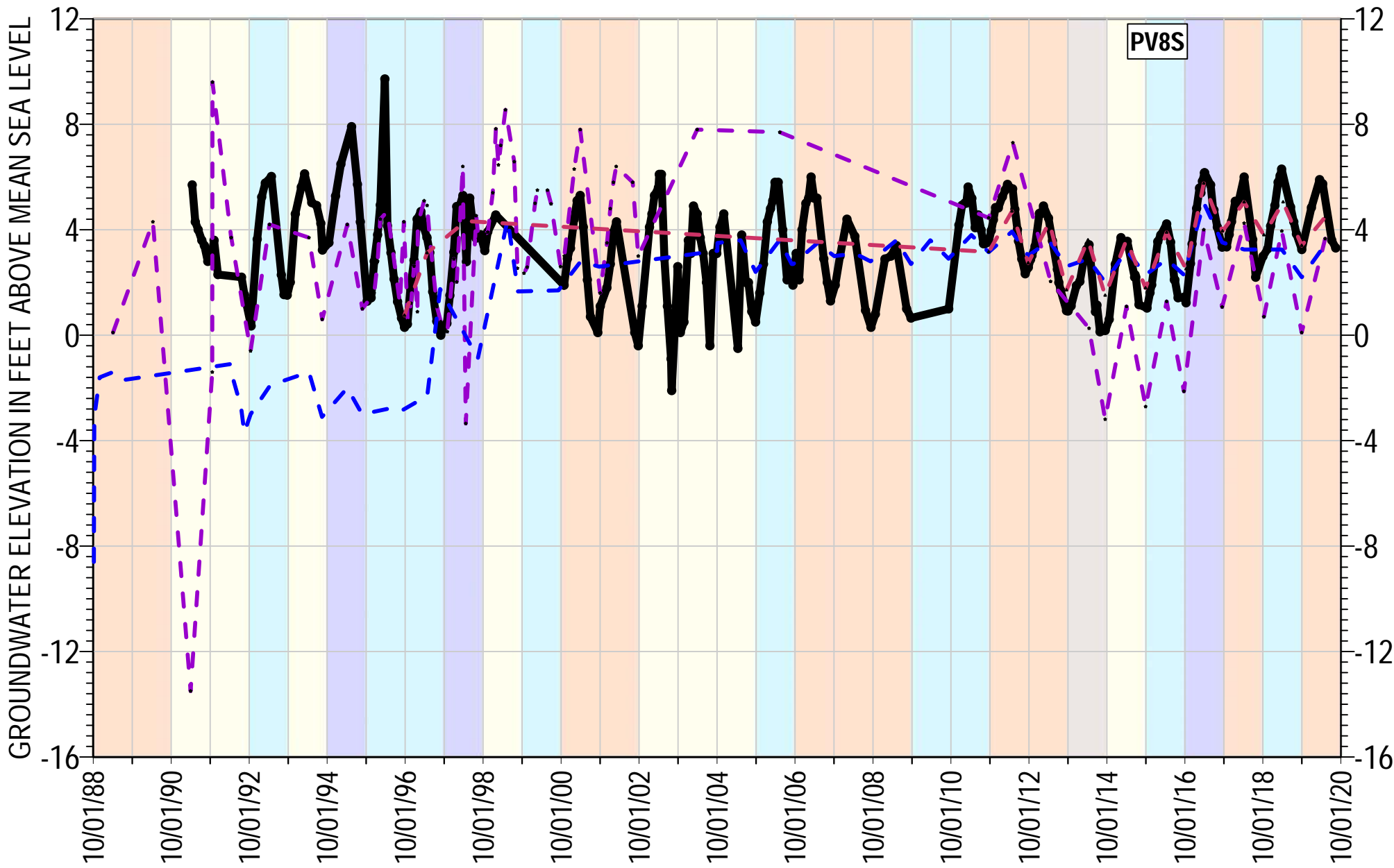
Reference Point Elevation= 9.5 ft AMSL
 Well Type: Nested MW
 Total Depth: 280 ft bgs
 Well Screen Interval= 260-280 ft bgs

Water Year Classification

 Very Wet	 Dry
 Wet	 Very Dry
 Average	



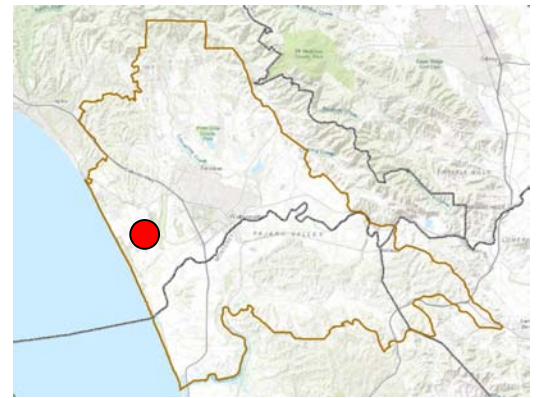
**Note: Pumping measurements and outlier data removed where applicable*



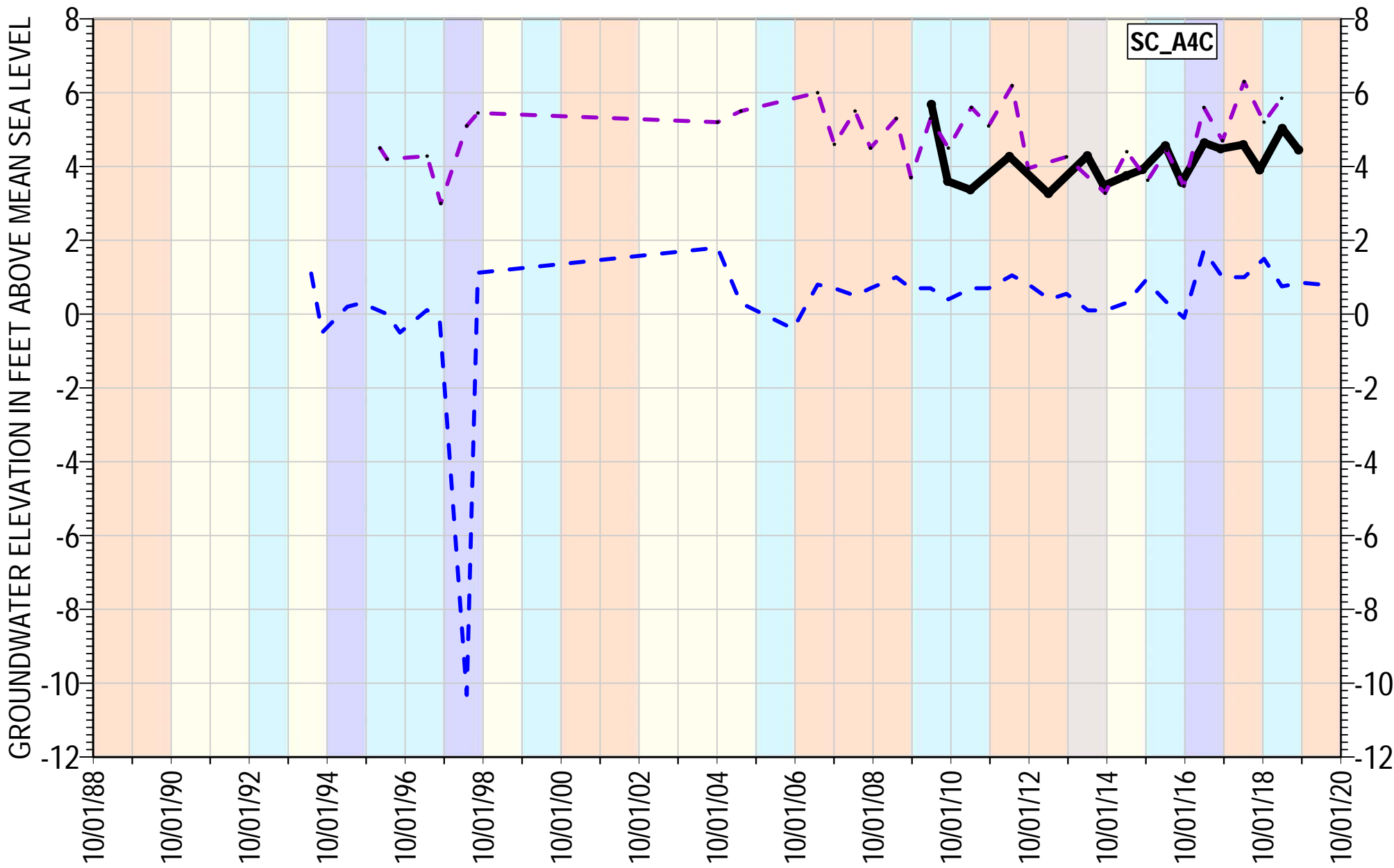
- PV8S Groundwater Elevation
- Nearby Well 1
- Nearby Well 2
- Nearby Well 3

Reference Point Elevation= 118.1 ft AMSL
 Well Type: Nested MW
 Total Depth: 8.4 ft bgs
 Well Screen Interval= 136.1-145.2, 188.2-198.4 ft bgs

- Water Year Classification**
- Very Wet
 - Wet
 - Average
 - Dry
 - Very Dry



*Note: Pumping measurements and outlier data removed where applicable



SC_A4C Groundwater Elevation
 Nearby Well 1
 Nearby Well 2

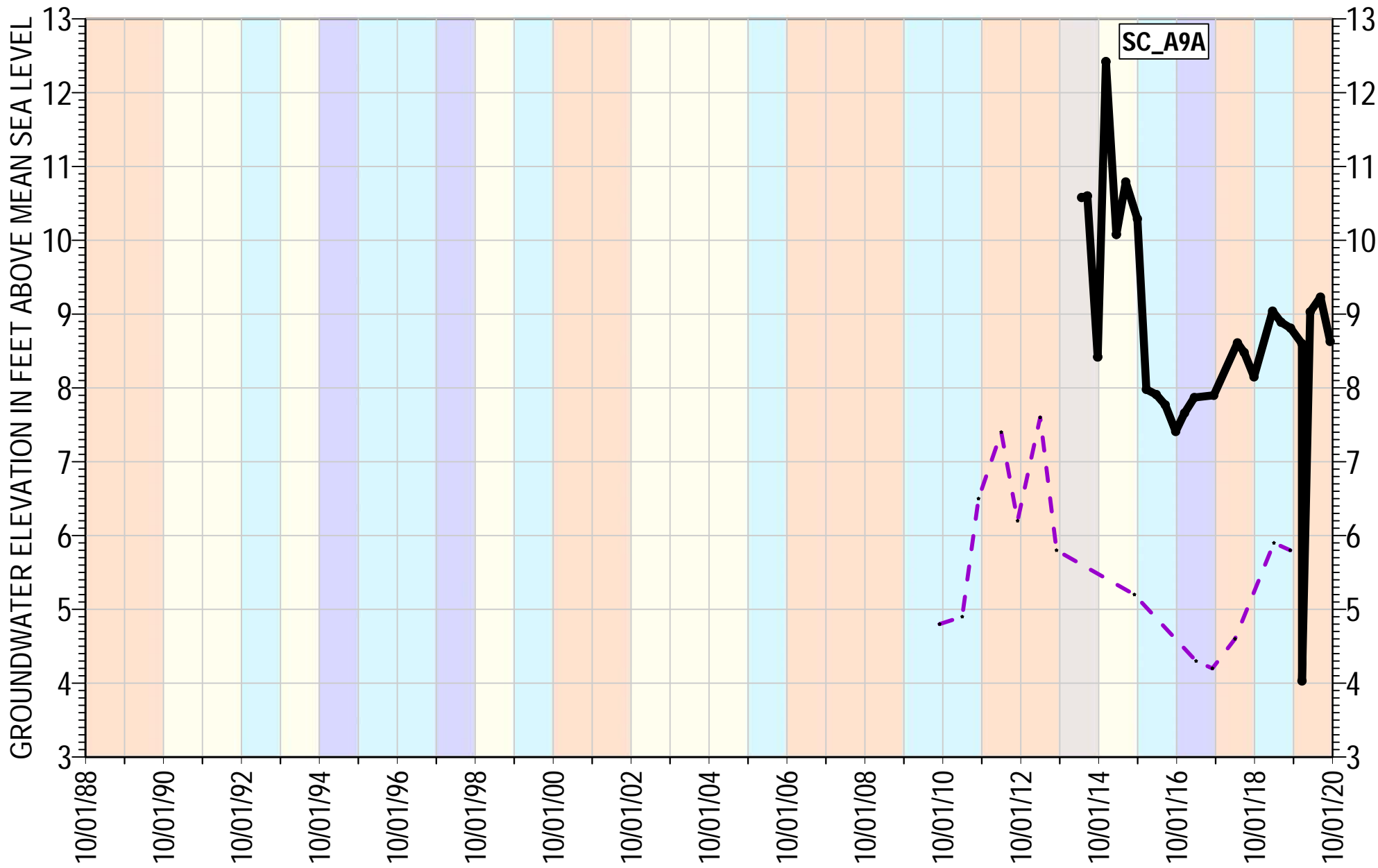
Reference Point Elevation= 185.9 ft AMSL
 Well Type: Monitoring Well
 Total Depth: 410 ft bgs
 Well Screen Interval= 290-310, 390-410 ft bgs



Water Year Classification

Very Wet	Dry
Wet	Very Dry
Average	




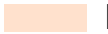
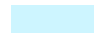


*Note: Pumping measurements and outlier data removed where applicable

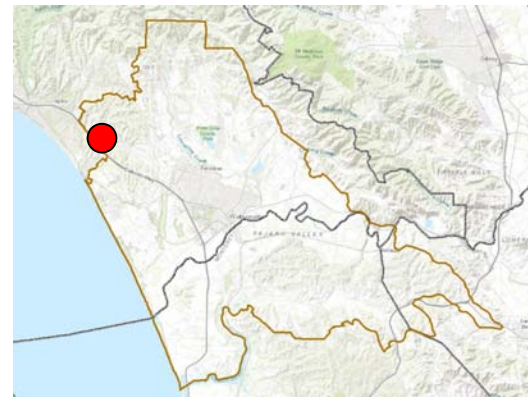


 SC_A9A Groundwater Elevation
 Nearby Well 1

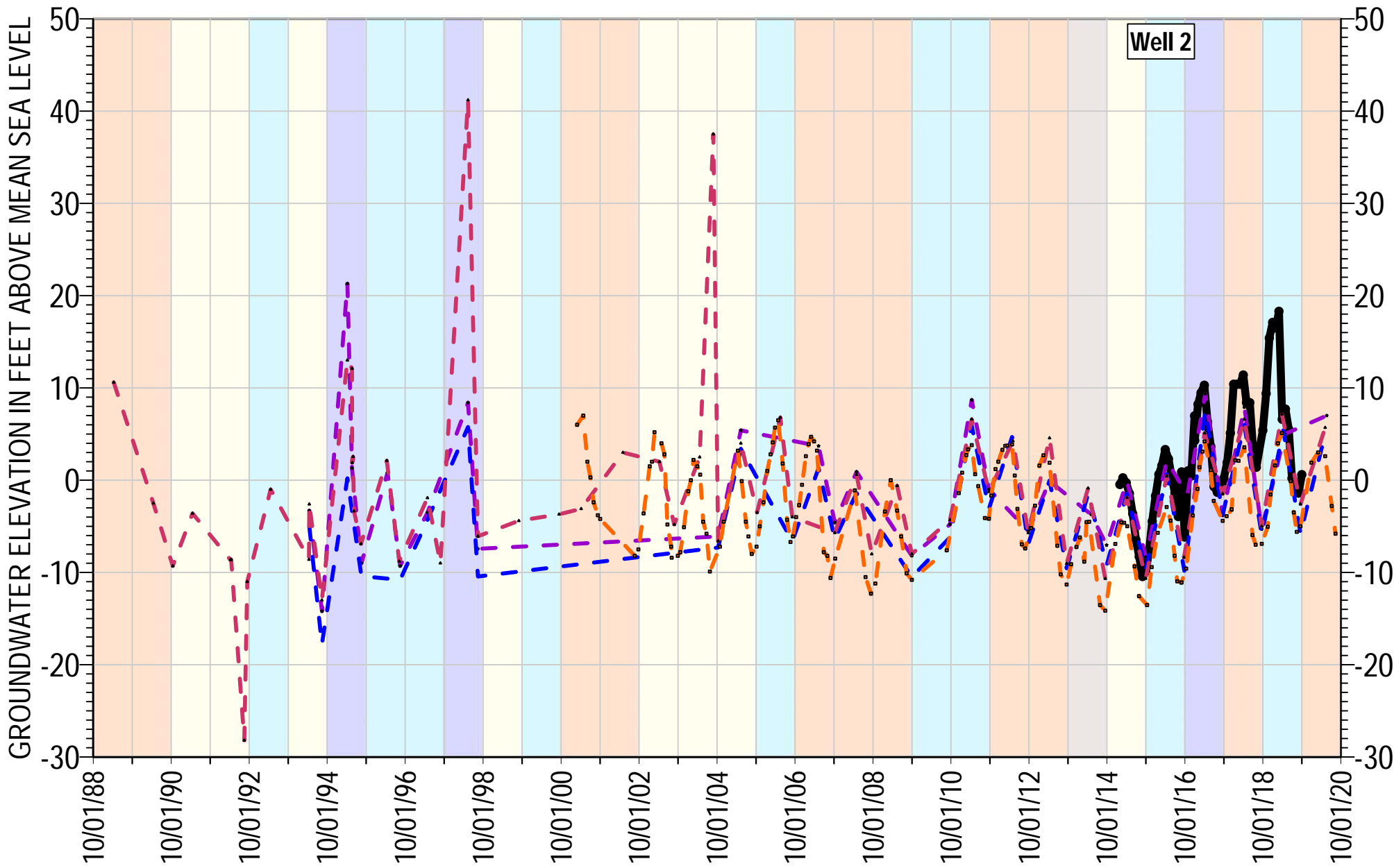
Reference Point Elevation= 399.88 ft AMSL
 Well Type: Monitoring Well
 Total Depth: 710 ft bgs
 Well Screen Interval= 670-710 ft bgs

Water Year Classification

 Very Wet	 Dry
 Wet	 Very Dry
 Average	



*Note: Pumping measurements and outlier data removed where applicable

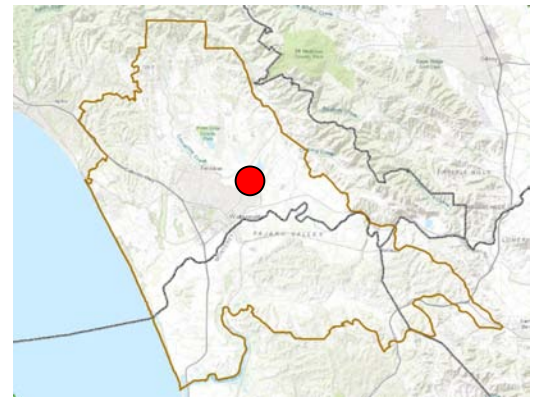


- Well 2 Groundwater Elevation
- Nearby Well 1
- Nearby Well 2
- Nearby Well 3
- Nearby Well 4

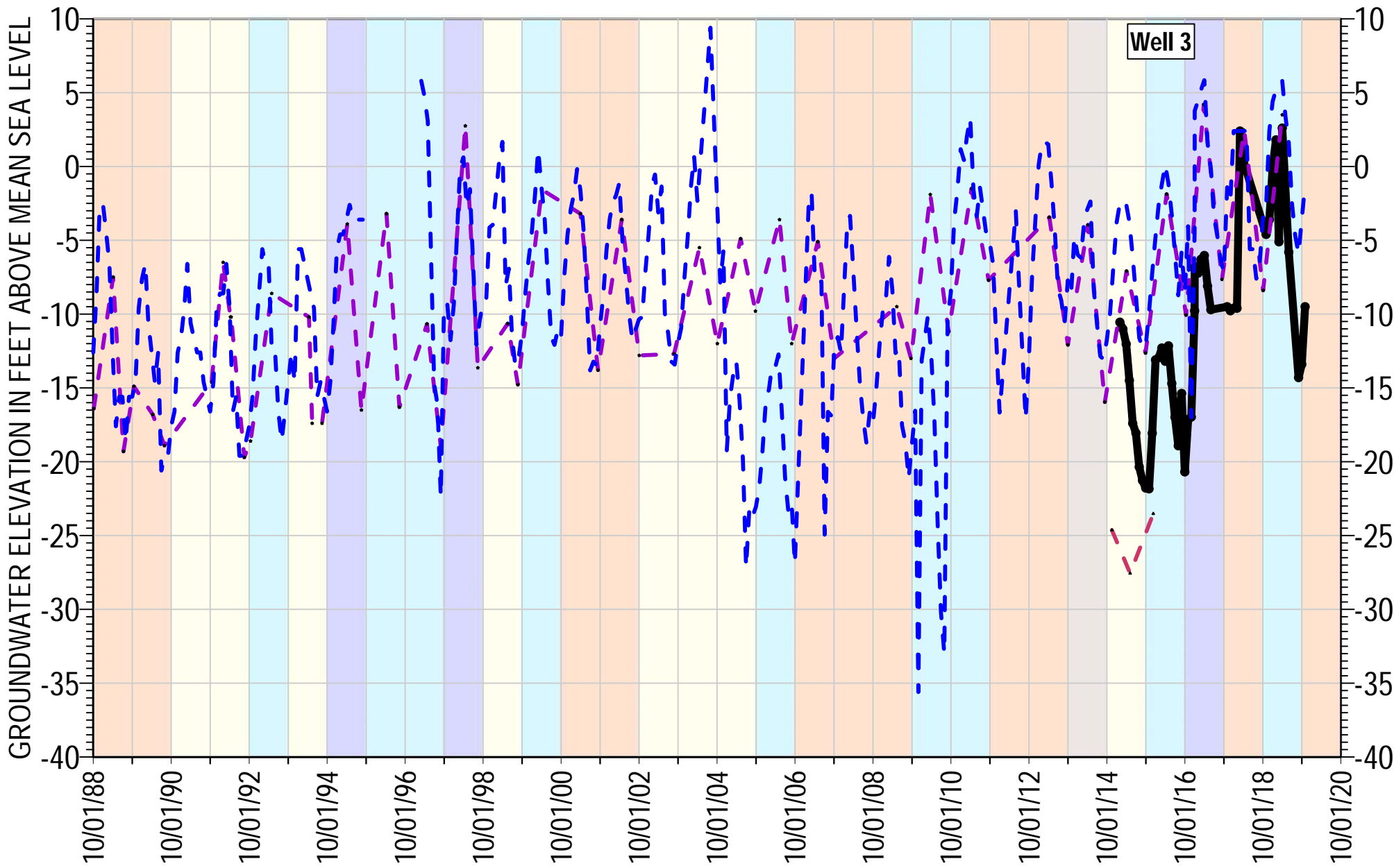
Reference Point Elevation= 63.4 ft AMSL
 Well Type: Supply Well
 Total Depth: 413 ft bgs
 Well Screen Interval= 213-413 ft bgs

Water Year Classification

Very Wet	Dry
Wet	Very Dry
Average	



*Note: Pumping measurements and outlier data removed where applicable



Well 3

- Well 3 Groundwater Elevation
- Nearby Well 1
- Nearby Well 2
- Nearby Well 3

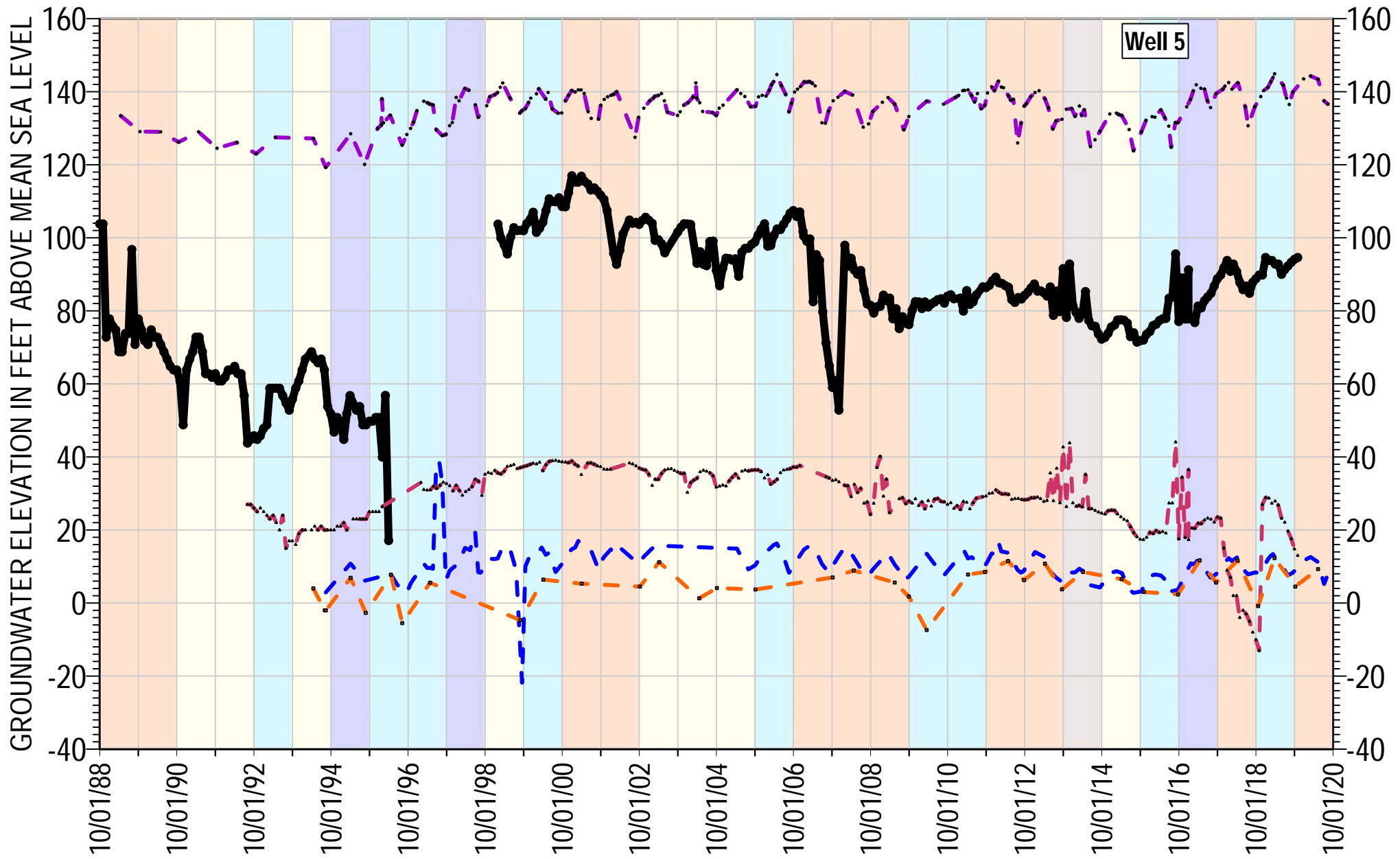
Reference Point Elevation= 32.4 ft AMSL
 Well Type: Supply Well
 Total Depth: 230 ft bgs
 Well Screen Interval= 190-230 ft bgs

Water Year Classification

Very Wet	Dry
Wet	Very Dry
Average	



*Note: Pumping measurements and outlier data removed where applicable



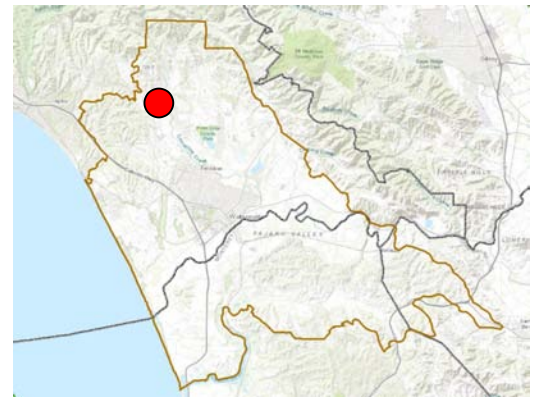
Well 5

- Well 5 Groundwater Elevation
- Nearby Well 1
- Nearby Well 2
- Nearby Well 3
- Nearby Well 4

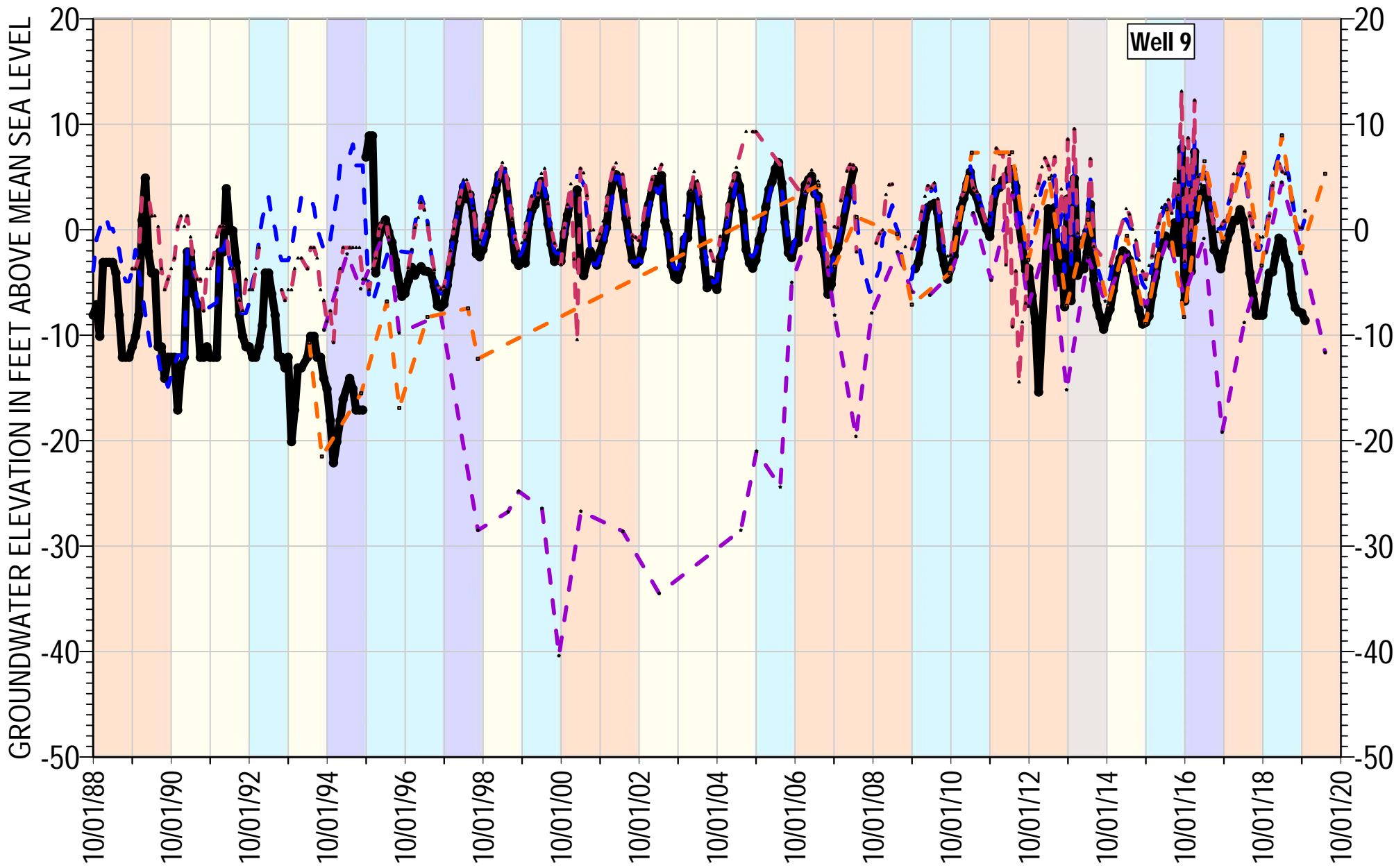
Reference Point Elevation= 268.8 ft AMSL
 Well Type: Supply Well
 Total Depth: 380 ft bgs
 Well Screen Interval= 306-380 ft bgs

Water Year Classification

Very Wet	Dry
Wet	Very Dry
Average	



*Note: Pumping measurements and outlier data removed where applicable

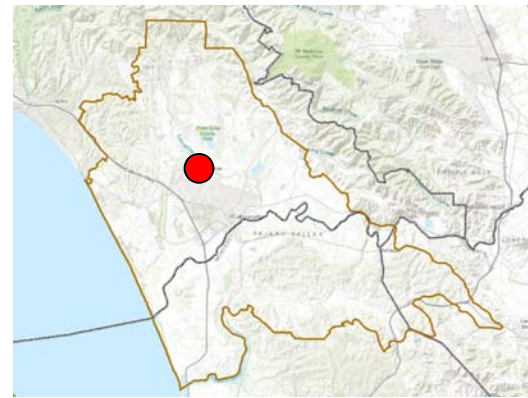


Well 9

- Well 9 Groundwater Elevation
- - -** Nearby Well 1
- - -** Nearby Well 2
- - -** Nearby Well 3
- - -** Nearby Well 4

Reference Point Elevation= 137.9 ft AMSL
 Well Type: Supply Well
 Total Depth: 535 ft bgs
 Well Screen Interval= 435-535 ft bgs

- Water Year Classification**
- Very Wet
 - Wet
 - Average
 - Dry
 - Very Dry



*Note: Pumping measurements and outlier data removed where applicable