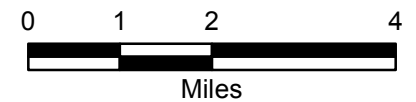
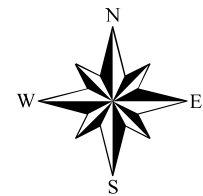


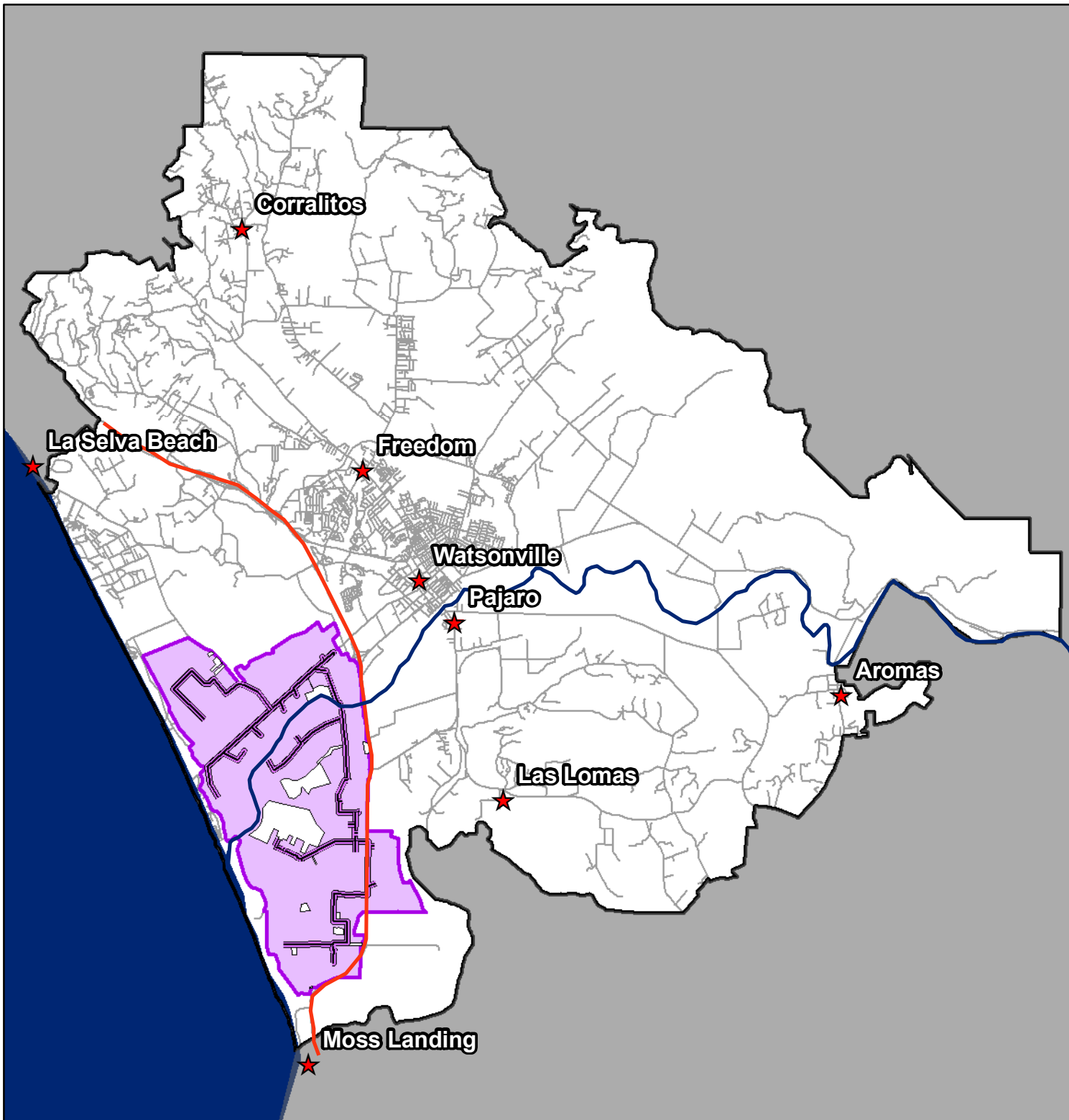
Rate Zones

Explanation

- ★ Cities & Towns
- Roads & Streets
- Highway 1
- Pajaro River
- Coastal Distribution System
- ⊕ Outside Delivered Water Zone
- ⊕ Delivered Water Zone



Pajaro Valley
Water Management Agency



| Customer Group | Current Rates | Average Percent Increase | Proposed Rates | Proposed Rates | Proposed Rates | Proposed Rates | Proposed Rates |
|---|---------------|--------------------------|----------------|----------------|----------------|----------------|----------------|
| | FY 2014/15 | | FY 2015/16 | FY 2016/17 | FY 2017/18 | FY 2018/19 | FY 2019/20 |
| Augmentation Charge, Metered Users - Outside DWZ (\$/AF) | \$179 | 6.6% | \$191 | \$203 | \$217 | \$231 | \$246 |
| Augmentation Charge, Metered Users - Inside DWZ (\$/AF) | \$215 | 9.5% | \$235 | \$258 | \$282 | \$309 | \$338 |
| Augmentation Charge, Unmetered (Rural Residential)¹ (\$/Year per Residence) | \$101 | 6.0% | \$92 | \$97 | \$103 | \$109 | \$115 |
| Delivered Water Charge (\$/AF) | \$338 | 3.0% | \$348 | \$359 | \$369 | \$380 | \$392 |

Note: 1. Unmetered Customers are currently charged for an estimated annual consumption of 0.6 AF per year for each known residence connected to an unmetered well. The proposed new rate estimates 0.5 AF per year consumption due to conservation.